


## Radiancy

Radiancy, world-leaders in phototherapy, develops and manufactures light-based systems for skin photo-rejuvenation, acne clearance, hair removal, psoriasis care, laser skin-resurfacing and tattoo and pigmented lesion removal. In 1998, Radiancy developed Light & Heat Energy (LHE). LHE combines the energies of Light and Heat to create a more efficient photo thermal process. This enabled Radiancy to develop smaller, smarter and safer light-based systems. Radiancy's premier system for photo epilation was released in 2000. Within one year of the product's release, it captured 32% of the market share in annual unit sales. LHE revolutionized the industry by bringing down costs and became the standard for safety, delivering outstanding results from easy-to-use devices. With one of the largest install bases of over 8,000 LHE units and an extensive product line of both LHE and laser systems, Radiancy continues to uphold its commitment to make effective and affordable light-based therapy available to everyone. A global network of distributors and sales representatives operating in over 50 countries worldwide and continued support for marketing, technical, clinical and financial assistance.



[www.radiancy.com](http://www.radiancy.com)

40 Ramland Road South, Suite 10 Orangeburg, New York 10962, USA  
Tel: +1 845 398 1647 Fax: +1 845 398 1648 Toll Free: 1 888 661 2220

 Radiancy meets the demanding standards and requirements for ISO 13485-2003 Certification. This certification is your assurance of our commitment to the delivery of high-quality products and services and to continuous improvement.

© 2007 Radiancy Inc. All rights reserved. LHE and Radiancy are registered trademarks of Radiancy Inc.  
Product specifications may change without prior notice



## LHE® Hair Removal Clinical Casebook





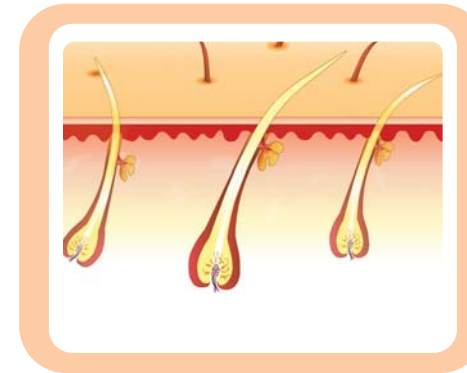
## *LHE Hair Removal*

Clinically proven LHE (Light & Heat Energy) technology delivers lasting hair removal with unsurpassed safety and effectiveness. Using a unique combination of light and heat energies, LHE hair removal significantly inhibits future hair growth.

- *Safe* - LHE targets the hair follicle while protecting the surrounding skin
- *Quick* - Some systems clear an entire back in less than 15 minutes
- *For Everyone* - Treats all skin types and hair colors

## How It Works

In order to inhibit and prevent future hair growth, the hair bulb must be damaged. Raising the temperature inside the follicle until it clots is essential to its destruction. Unlike conventional light-based technologies, LHE uses heat generated by the flash of light to safely achieve this goal.



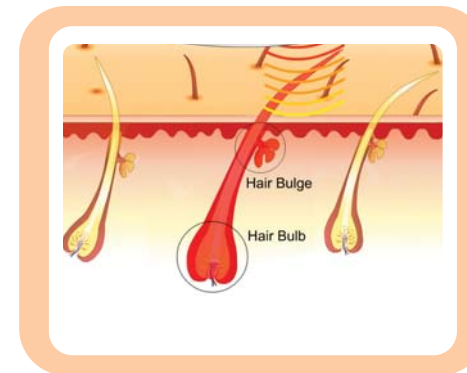
*A test session sets the safest and most effective treatment energy level based on skin type and hair color.*



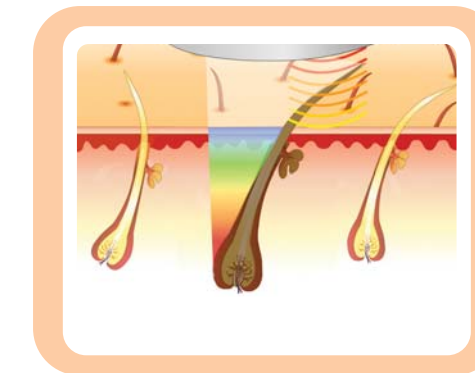
*Flashes of broad spectrum light and heat are applied to the target area.*



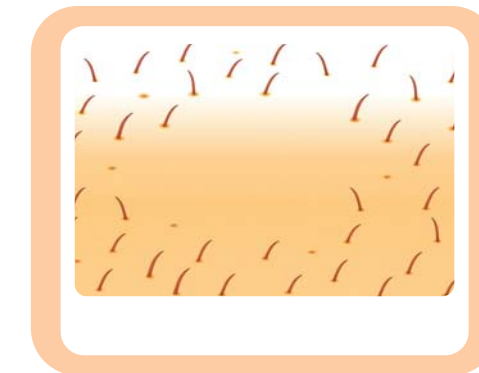
*Light is drawn to the melanin in the hair, raising the temperature of the hair follicle.*



*Heat energy from the lamp is conducted down the hair shaft, increasing the hair follicle temperature.*



*The combined energies of light and heat result in the destruction of the hair follicle.*



*LHE, long-term hair removal for hair-free skin.*

*Female, Skin Type IV*



*Before*



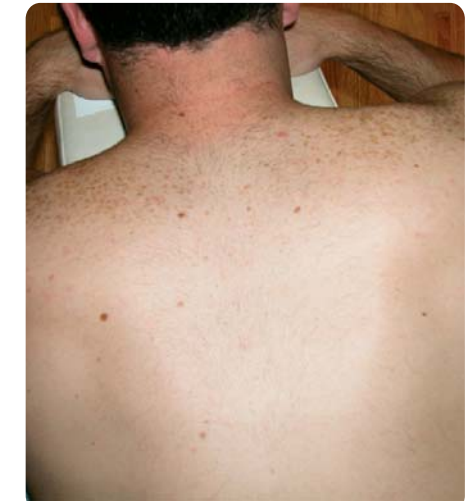
*4 months after final LHE treatment*

*Courtesy of Helena Lima, MD*

*Male, Skin Type II*



*Before*



*2 months after final LHE treatments*

*Courtesy of Gary Lask, MD*



*Before*



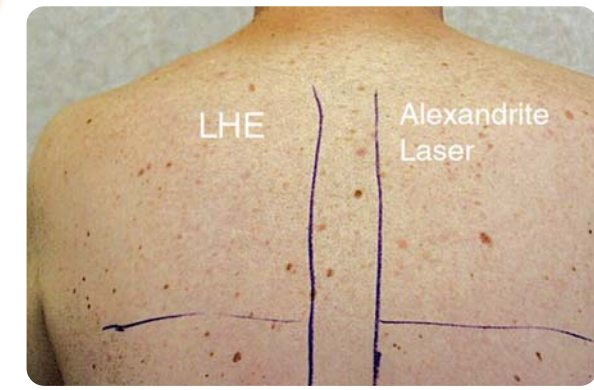
*3 months after final LHE treatment*

*Courtesy of Chulindr Dhanavoravibul, MD*

*Male, Skin Type II with light brown/reddish back hair*



*Before*



*After 3 LHE treatments on the left and an Alexandrite laser on the right*

*Courtesy of Gary Lask, MD*



Before



1.5 months after 7 treatments

Courtesy of Radiancy Clinical Department



Before



1.5 months after 7 treatments

Courtesy of Radiancy Clinical Department

Female, Skin type III



Before



1 month after final LHE treatment

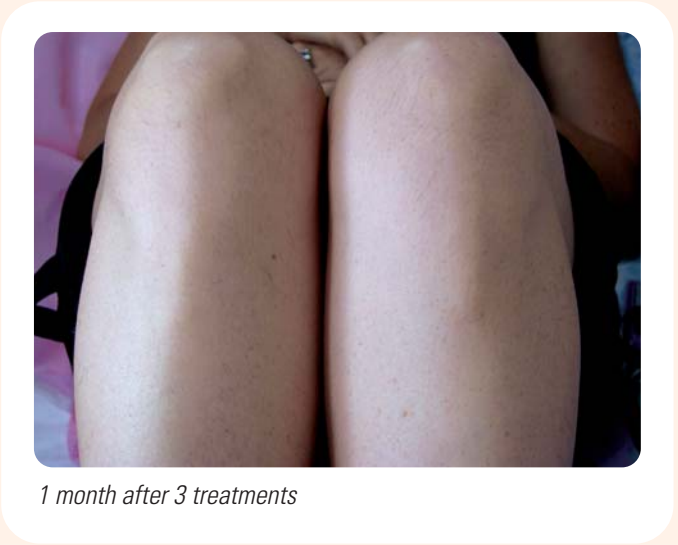


Before



1 year later, Bikini line

Courtesy of Radiancy Clinical Department



Female, Skin Type II



Courtesy of Katherine Dunbar, CPE, CME, LEI



Courtesy of Radiancy Clinical Department

Female, Skin Type IV



Courtesy of Radiancy Clinical Department